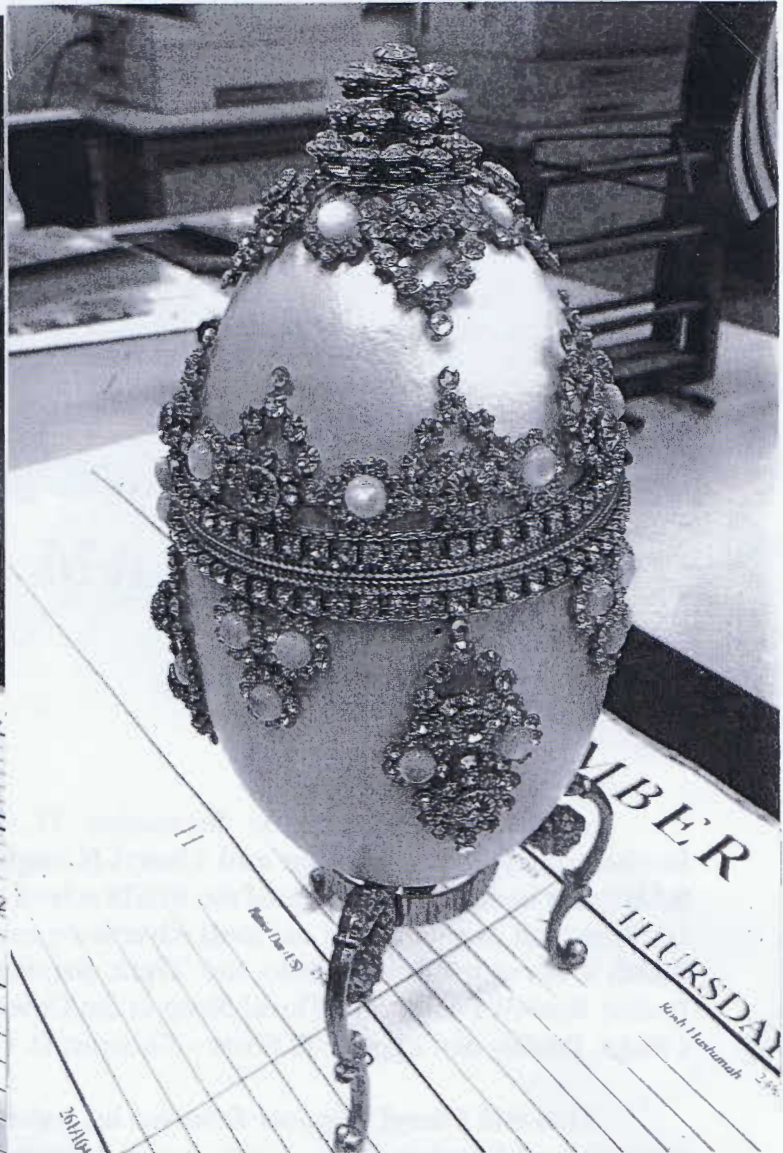


CURATOR'S REPORT

THE BERLIN AREA HISTORICAL SOCIETY

NOVEMBER 10, 2014

PAUL JACKSON COLEMAN DONATES TWO FABERGÉ EGGS!



During the month of October, we have received two reproductions of **Fabergé eggs** from **Paul Jackson Coleman of Honolulu, Hawaii** to add to the display of fancy china and souvenir glassware that the retired educator and former Berlin resident donated in past years. A Fabergé egg is any one of the thousands of jeweled eggs made by the House of Fabergé from 1885 to 1917. Most were miniature eggs that were popular gifts at Easter. The eggs were gifts to Jack from his special friend, the late **Elaine Barrie Barrymore**, an actress who appeared in films, on stage, and on the radio. She was the fourth wife of the late Shakespearean actor John Barrymore. Elaine passed away on February 22, 2003 at the age of 87. Great stars such as Greta Garbo, Marilyn Monroe and Errol Flynn were just a few with whom Elaine shared a close friendship.

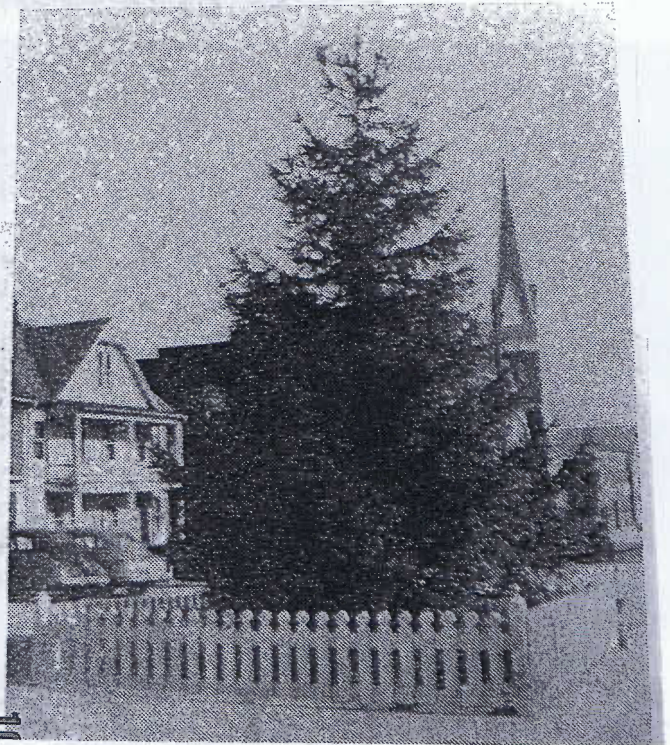
DON AND CHERYL GLESSNER DONATE BBHS MOUNTAIN-EAR NEWSPAPERS AND OLD ADVERTISING CALENDARS!



FERNDALE FARM

Blood Tested Baby Chicks
POULTRY & EGGS AT ALL TIMES
PHONE 2565 • BERLIN, PA.
S. D. GLESSNER, Owner

Christmas Tree On the Diamond



After having auction on September 27, 2014 at their former dairy and crop farm in Brothersvalley Township, **Don and Cheryl (Coughenour) Glessner** donated miscellaneous items to BAHS that include older issues of the BBHS school newspaper, The Mountain-Ear from the 1940s and 1950s as well as a variety of old local advertising calendars. Included with the calendars are ones from **Smith's Service Station** (Auto and Truck Service and Inspection Station) on Cumberland Street, Berlin; **Rosie's Posies Silk Floral Shop** in the Downey area, and **Ferndale Farm** (Blood Tested Baby Chicks, Poultry and Eggs at all times – Sherman D. Glessner, Brothersvalley Township.)

Don and Cheryl Glessner followed his parents, Sherman D. and Anna (Weighley) Glessner in ownership of Ferndale Farm, which earlier belonged to the William F. Gnagey family. Sherman and Anna Glessner purchased the farm in August 1925.

Don and Cheryl Glessner relocated in September (in the same neighborhood) to the former retirement home of Vera Shultz and the late J. William Shultz, which they have purchased. The Stoltzfus Brothers also purchased the Glessner family farm in 2014. Current residents of the farm house are Justin and Ashley (Stoltzfus) Kaufman, a young married couple interested in dairy farming.

The picture of the Berlin "**Christmas Tree on the Diamond**" appeared in one of the issues of the Mountain-Ear newspapers that Don and Cheryl Glessner donated to us. Few pictures exist of the various Christmas trees that were erected in the middle of Berlin's lower diamond in years passed.

Rosie's Posies Silk Floral Shop

Flowers For All Occasions

Phone: 814/267-3623 R.D. #1, Rt. 160, Berlin, Pa. 15530

Hours: Mon.-Thurs. 9-5 — Fri.-Sat. 9-9

MEMORIALS TO OUR ENDOWMENT FUND IN MEMORY OF ROBERT S. BRICK

As this report was being completed, 11 donations had been placed at the BAHS for our endowment fund in loving memory of Robert S. Brick, who frequently visited our facilities in the company of his wife, Eleanor. Eleanor was a special volunteer and we miss her services and her pleasant personality. A total of \$665.00 has been contributed by the following:

Mary Louise Mowery
Janice Ott
David and Virginia Hay
Dorothy Suder

David and Kerry McQuade
Ronald and Annabelle Bockes
Eldred and Sara Atchison
Somerset Rural Electric Coop

Dennis and Barbara McQuade
Daniel and Tammy Werner
Harry Fisher Post American Legion

VARIOUS ADDITIONAL DONATIONS

- **Jim Etris** donated miscellaneous items from Blair Krause's attic. **Randy Ware** donated scrapbook clippings kept by his Grandma Ivy Glessner. **Marian Cowan** donated \$50.00. **Jeanne Suehr** donated an etching made by Mrs. John (Rebecca) Johnson for her sister-in-law, Mrs. Jack (Nellie) Johnson. **Doyle Paul** donated a 2014 Berlin Fair catalogue and football memorabilia. **Danny Hay** donated BBHS Class of 1969's 45th year reunion program. **Berlin Brothersvalley High School** donated a 2014 Bervalon. **Mary Belle Cassady** donated books including the Somerset County Outline and Reflections of Stonycreek in addition to several photos. We received a 2014 updated plot map for the Pike Cemetery. **Leanne Calvert** donated the marriage certificate of Edward Miller and Ida Will.



This is a free Sinclair service. Get a Tour Request Card from your Dealer. Fill out and mail to us. Along with your maps, we'll send you a Tips Booklet that includes information for overnight stops.

If you want to plan your Tour Request Card, our Tour Service help you on your trip—anywhere in Mexico.

SMITH'S SERVICE STATION
Auto and Truck Service
Inspection Station 3709
Phone 4335

Cumberland St. Berlin, Penna 10/

FEEDING HER CHICKENS!



MINNIE (ASH) HAY WIFE OF JOHN ENGLE HAY FEEDING HER CHICKENS ON THE PHILSON FARM

AH, YESTERDAY

Grandmother, on an autumn day,
Milked the cows and fed them hay;
Slopped the hogs and saddled the mule;
And got the children off to school.

She did the washing, mopped the floors,
Washed the windows and did some
chores.

Cooked a dish of home-dried fruit,
Pressed her husband's Sunday suit.

Swept the parlor, made the bed,
Baked a dozen loaves of bread;
Split some firewood and lugged it in,
Enough to fill the kitchen bin.

Stewed some apples she thought would
spoil,

Cleaned the lamps and put in oil;
Cooked a supper that was delicious
And afterward she washed the dishes.

Fed the cat and sprinkled clothes,
Mended a basketful of horse,
Then opened the organ and began to
play,

“When You’ve come to the End of a
Perfect Day!”

- **Bill Keller** donated a technical manual, “The Army Cook.” **Linda McClintock** donated sheet music, Philson Bank advertising items, and a 1939 almanac. **Dorlin W. Hay** donated two Bervalon yearbooks, and two history books: Mongst the Hills of Somerset and The Berlin Area 1777-1977.

We appreciate the many things our volunteers do to assist with the work load at the Berlin Area Historical Society.

David R. Hay, Curator